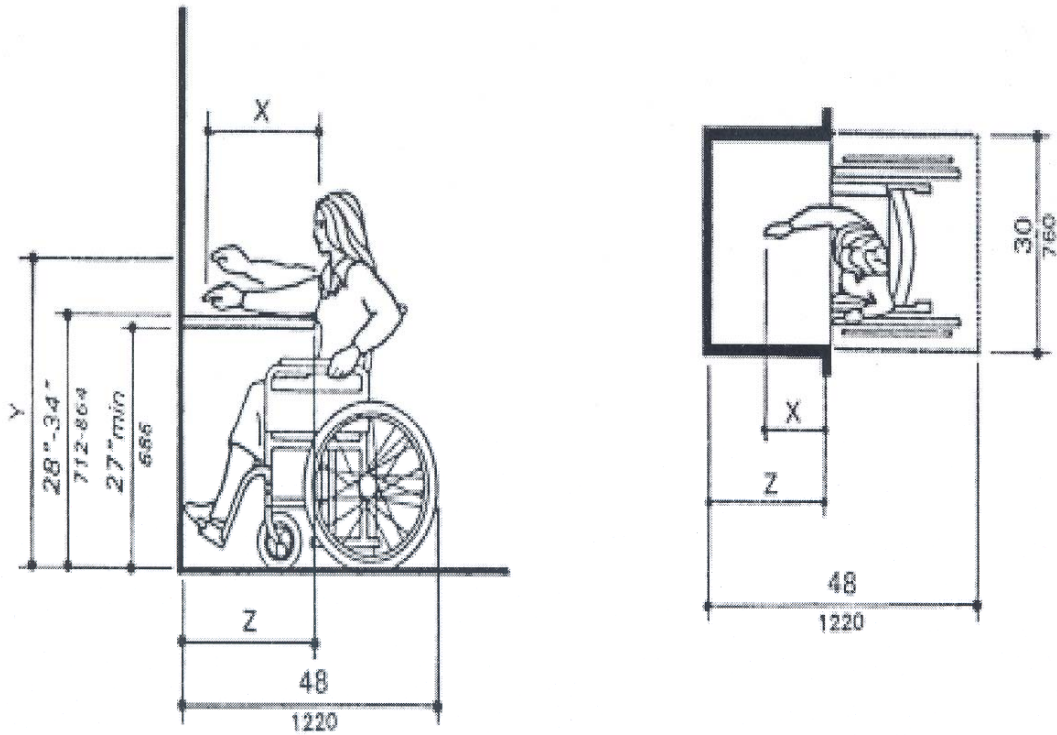


Figure: 1 TAC §81.57(a)(15)



NOTE: x shall be  $\leq 25$  in(635 mm); z shall be  $\geq x$ . When x < 20 in(510 mm), then y shall be 48 in(1220 mm) maximum. When x is 20 to 25 in(510 to 635 mm), then y shall be 44 in(1120 mm) maximum.

Figure 1, Maximum Forward Reach over Obstruction